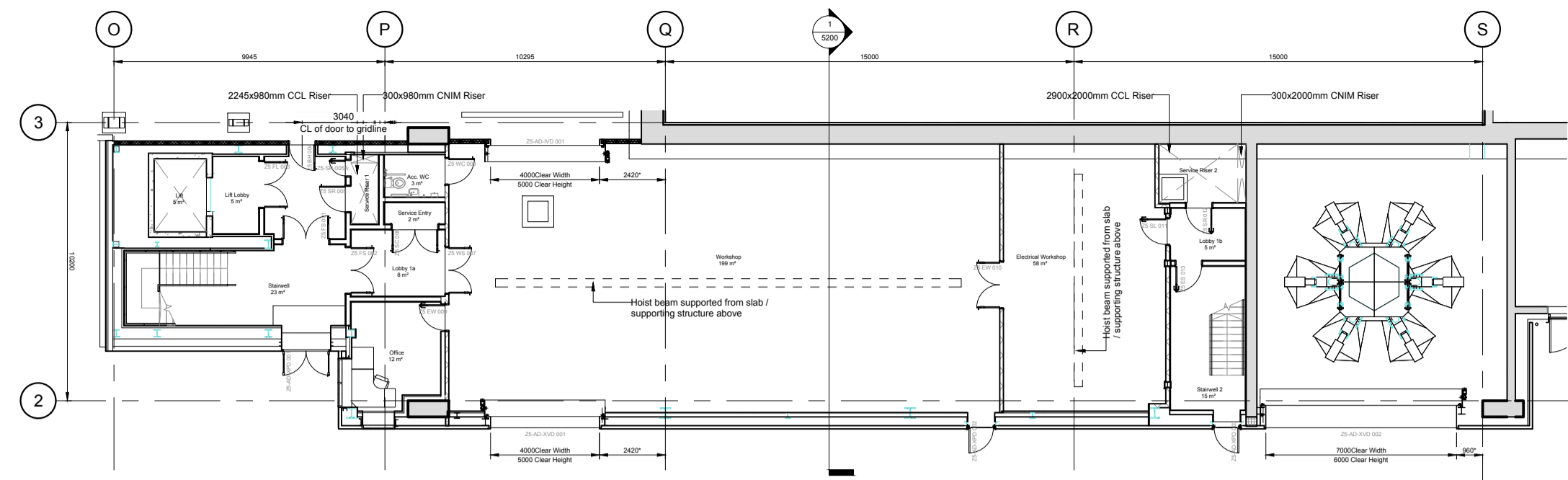
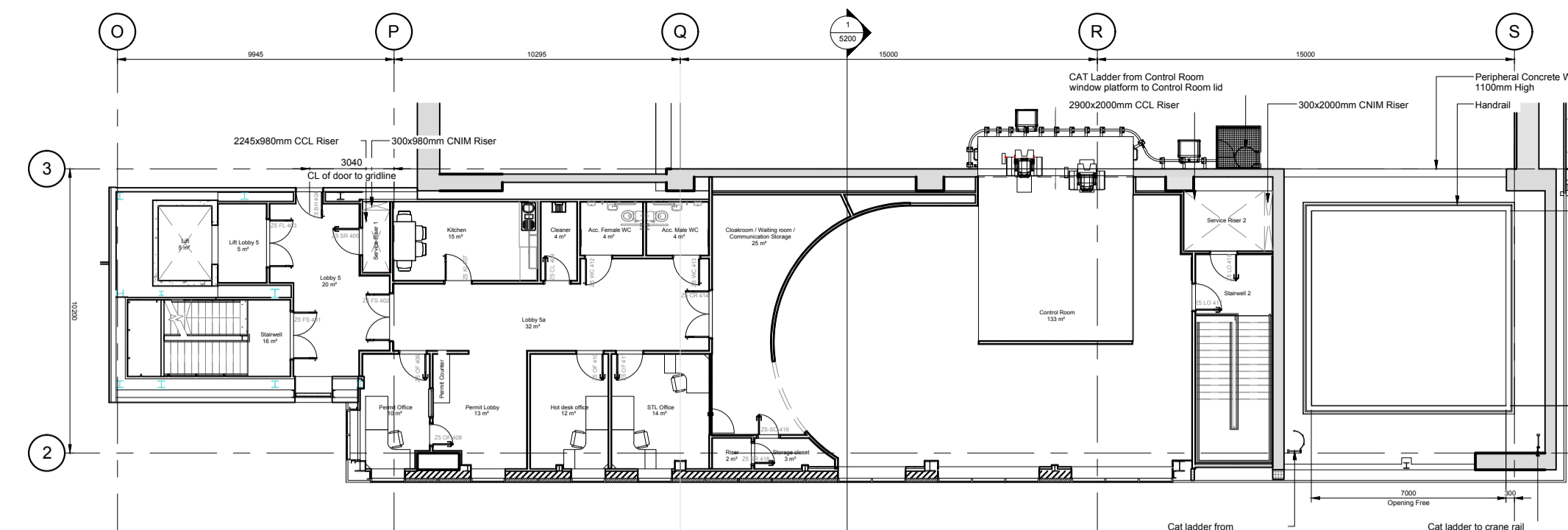


notes :

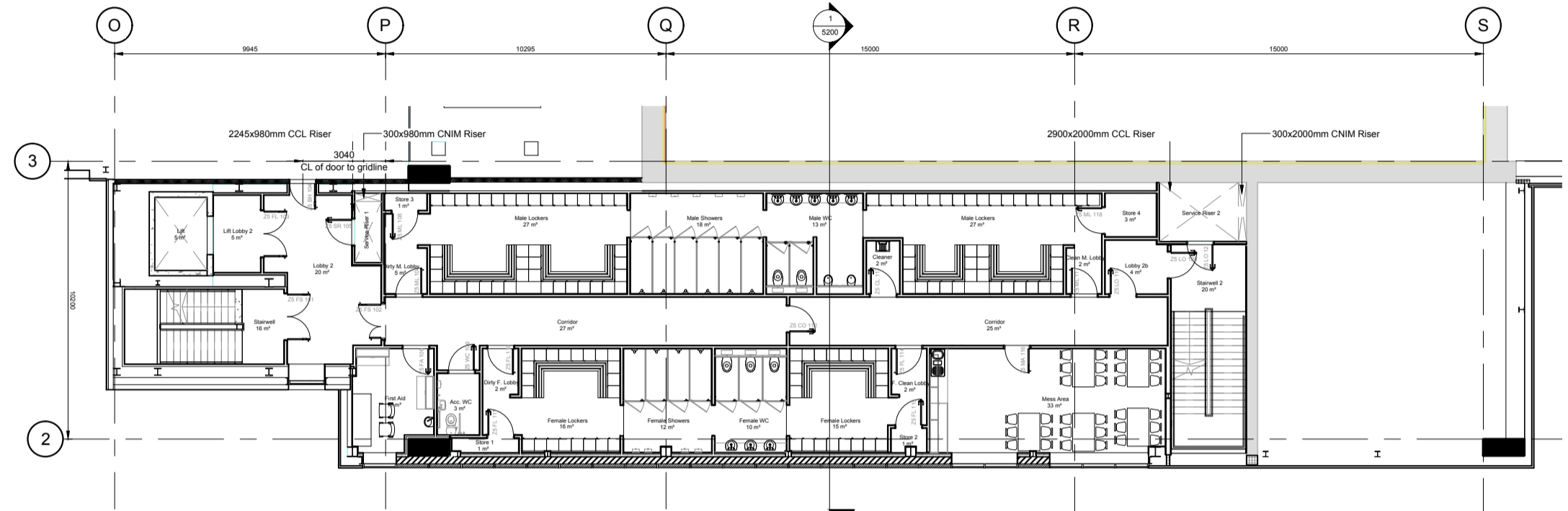
1. If this drawing has been received electronically it is the recipient's responsibility to print the document to the correct scale.
2. All dimensions are in millimetres unless stated otherwise. It is recommended that information is not scaled off this drawing.
3. This drawing should be read in conjunction with all other relevant drawings and specifications.
4. Internal dimensions to be confirmed at a later date.



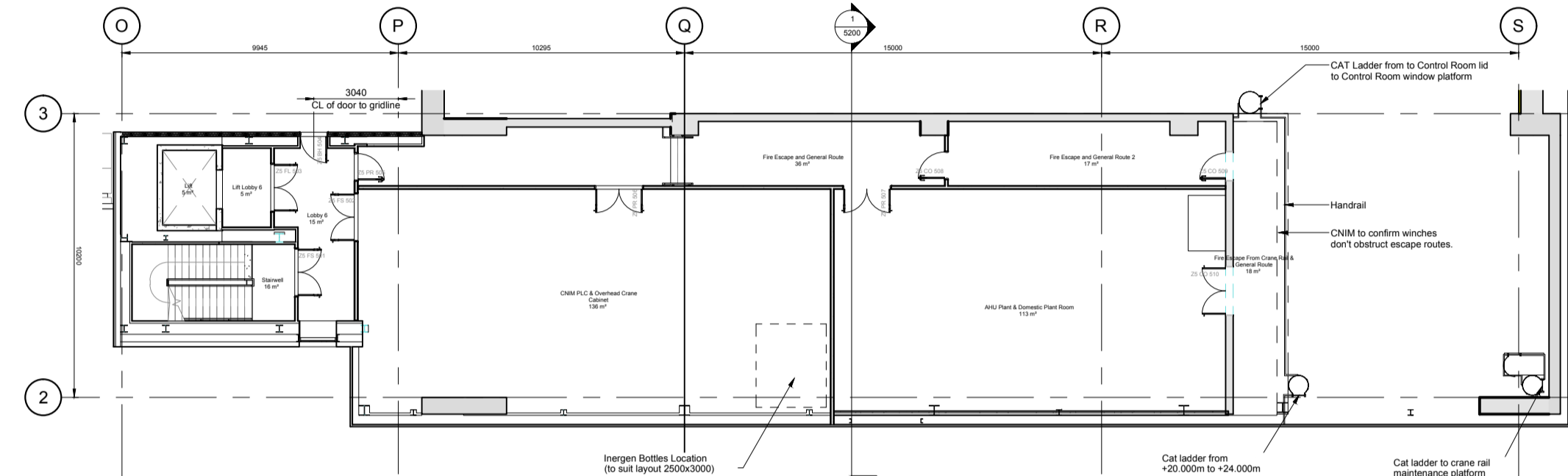
Ground Floor
Scale 1:200



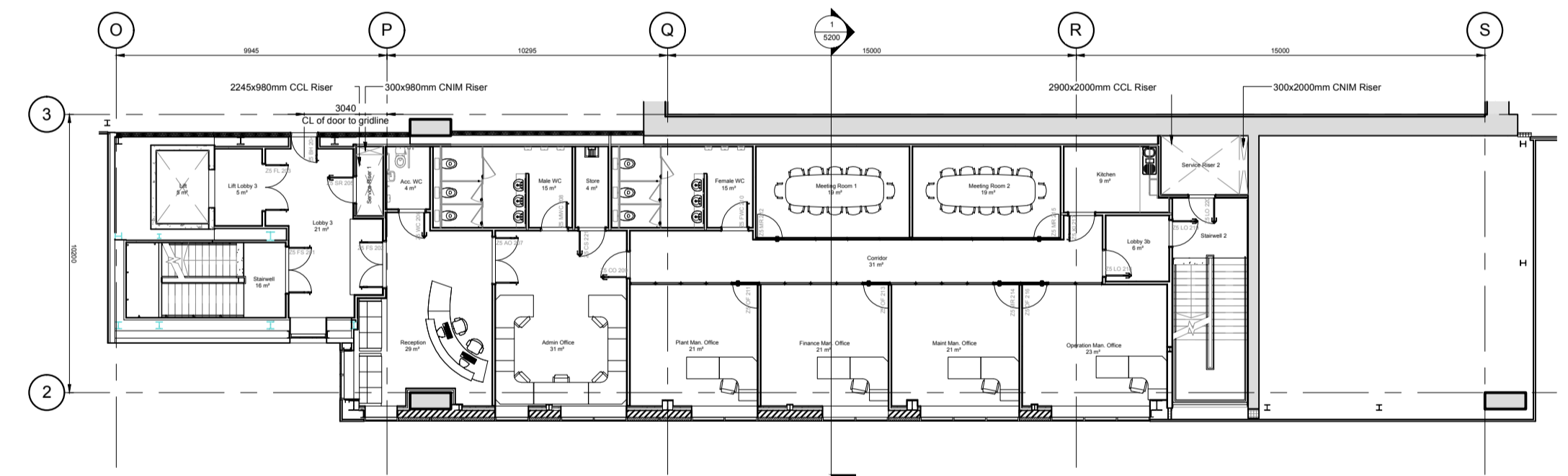
Fourth Floor
Scale 1:200



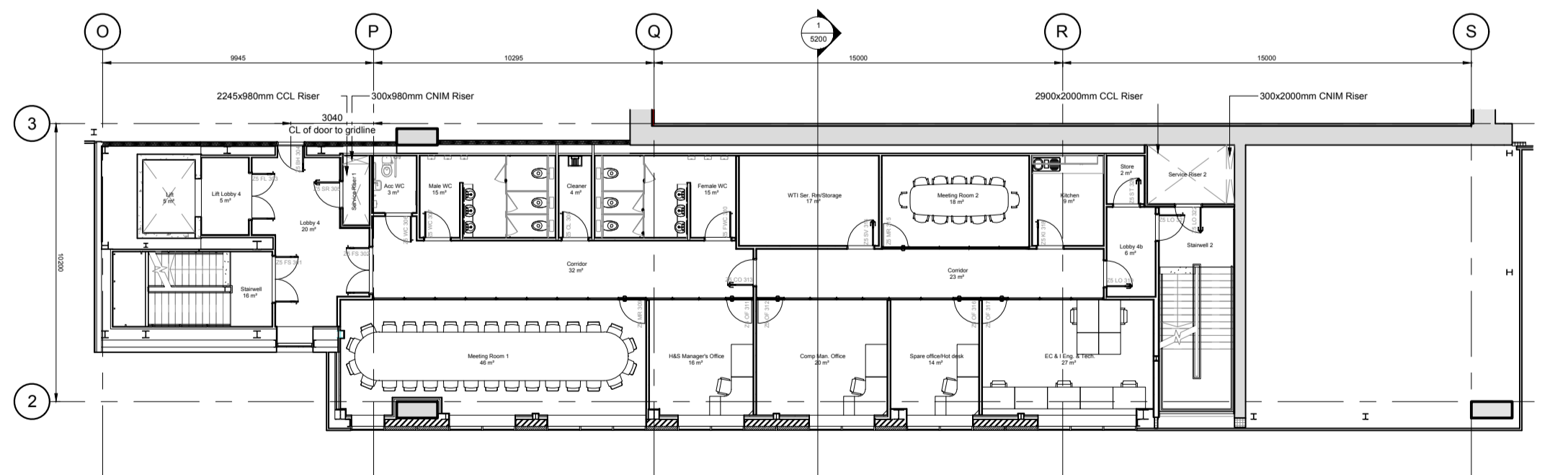
First Floor
Scale 1:200



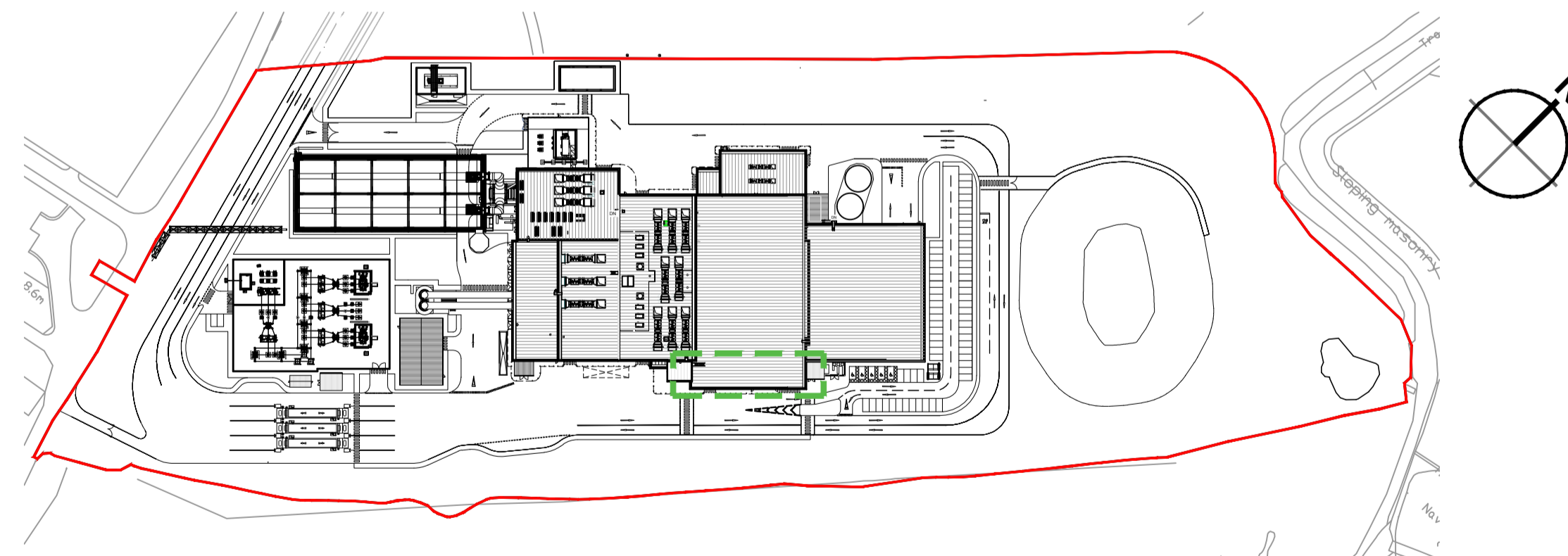
Fifth Floor
Scale 1:200



Second Floor
Scale 1:200



Third Floor
Scale 1:200



Key Plan
Scale 1:2000



Internal layouts indicative and subject to design development

Drawing for **PLANNING** purposes only

Content of drawing based on UMC drawing number 502520020002_UMG5101. Reproduced with permission

H	Labels on buildings & contour lines removed, hibernacular and control seats added.	BC	TFH	30.08.18
G	Admin floors revised and furniture updated to clients current layouts. Site key plan updated.	PBR	TFH	21.06.18
F	Client logos updated. Steam export rack updated as per CNM drawing. Floor Plans updated.	JT	CMGD	13.02.17
E	Floor Plans and Key Plan updated.	JH	CMGD	11.01.17
D	Keyplan updated. Client logo updated.	AJL	RS	05.07.13
C	Floor plans updated.	JAT	SG	08.10.12
B	E.ON logo added.	KRy	PRP	15.02.10
A	Floor plans clarified.	AJL	PRP	15.01.10

rev	amendments	by	ckd	date
-----	------------	----	-----	------



Sherwood House
Sherwood Avenue
Newark, Nottinghamshire
NG24 1GQ

T +44 (0) 1636 605 700
F +44 (0) 1636 610 696
W www.rpsgroup.com
E rpsnewark@rpsgroup.com



Client
Project: Kemsley Sustainable Energy Plant

Title: Typical Office and Staff Amenities Building (UYA) Floor Plans

Drawing Status	Date Created	Drawing Scale
Preliminary	18.11.09	1:200
Project Leader	Drawn By	Initial Review
AWY	SJLH	PRP

Drawing Number
16315/A1/P/0171 H

FIGURE 4.19D